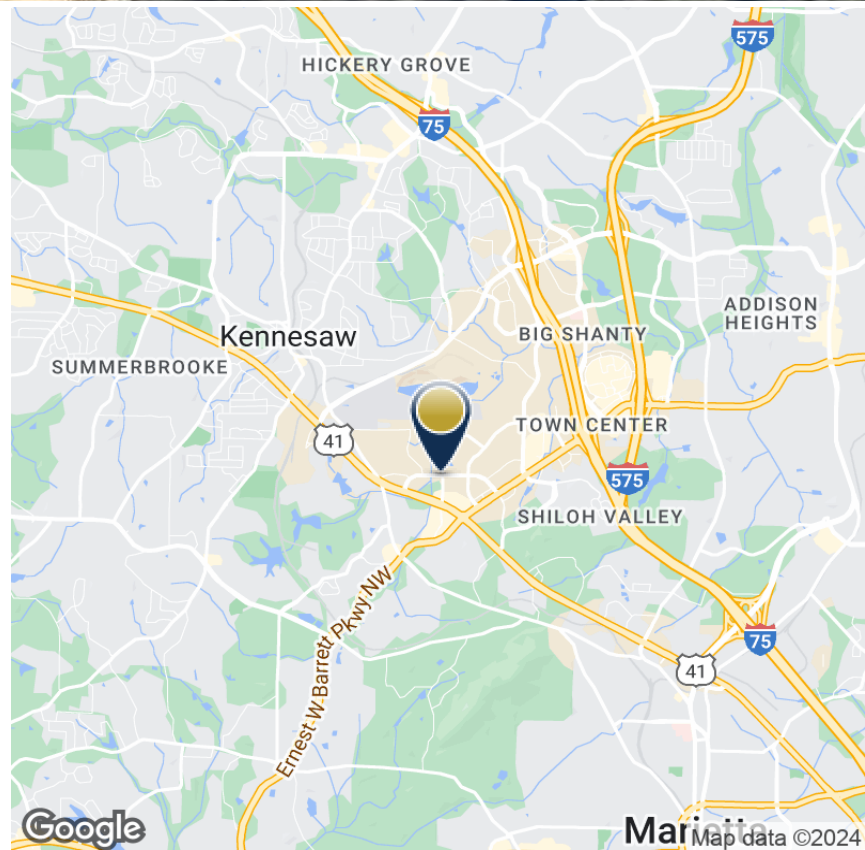




PROPERTY HIGHLIGHTS

- ±32,725 SF office building located in Kennesaw, GA
- Conveniently located near I-75 & I-575 Cobb Pkwy & Barrett Pkwy
- ±1,460-11,217 SF available for lease
- Suite 200 – 5,364 SF | Available Nov. 2024
- Suite 210 – 2,930 SF | Available Jan. 2025
- Suite 215 – 1,463 SF | Available immediately
- Suite 225 – 1,460 SF | Available Jan. 2025
- Up to +/-5,853 SF contiguous space available
- All suites have walk-up entrances and private restroom(s)
- Parking ratio: 5/1,000 SF surface parking
- Tenant has HVAC control
- Elevator & two staircases



CONTACT



SEAN WILLIAMS
S.V.P. The Office Group
404-876-1640 x126
Sean@BullRealty.com
BullRealty.com

BULL REALTY, INC.
50 Glenlake Parkway, Suite 600
Atlanta, GA 30328
BullRealty.com

LOCATION OVERVIEW

This property is conveniently located near I-75 & I-575, Cobb Pkwy & Barrett Pkwy with a plethora of retail and dining options including easy access to the new Kennesaw Marketplace development on Cobb Pkwy and minutes from Kennesaw State University. It is about 34 miles from Hartsfield-Jackson International Airport and 22 miles from Downtown Atlanta.

The city of Kennesaw is convenient to both I-75 and I-575 and has the perfect combination of small-town charm with big city amenities. Designated as a Preserve America Community, which recognizes communities that protect and celebrate their heritage, the local economy has grown significantly in recent years with establishment of retail centers and other businesses, making it a part of the Atlanta MSA.

With the expansion of Cobb County International Airport and Kennesaw State University, the location has become an integral player in the trends and investments of the greater region. South Cobb County estimates from late 2019 revealed that only 12% of the county is undeveloped or underdeveloped. This means that relocating a business to this area will likely to be the result of seizing the opportunity to occupy or redevelop. The presence of public buildings, educational resources, a safe, central business district and well-maintained neighborhoods



IN THE AREA MAP



CONTACT



SEAN WILLIAMS
S.V.P. The Office Group
404-876-1640 x126
Sean@BullRealty.com
BullRealty.com

BULL REALTY, INC.
50 Glenlake Parkway, Suite 600
Atlanta, GA 30328
BullRealty.com

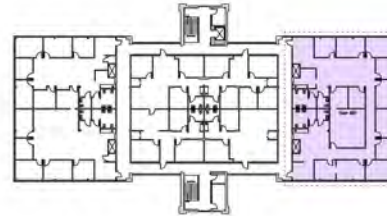
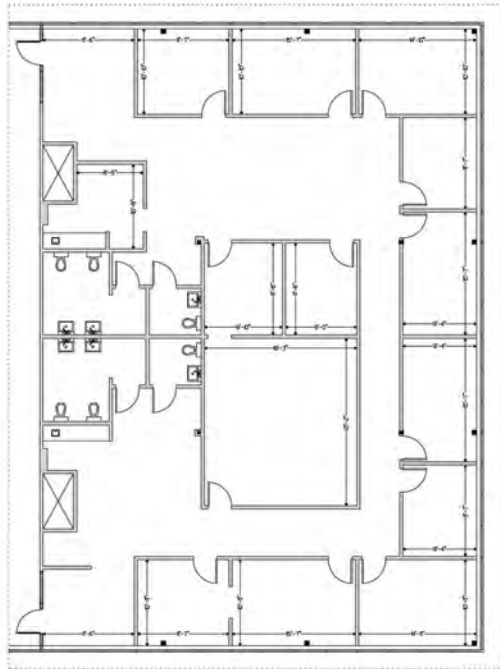


CONTACT




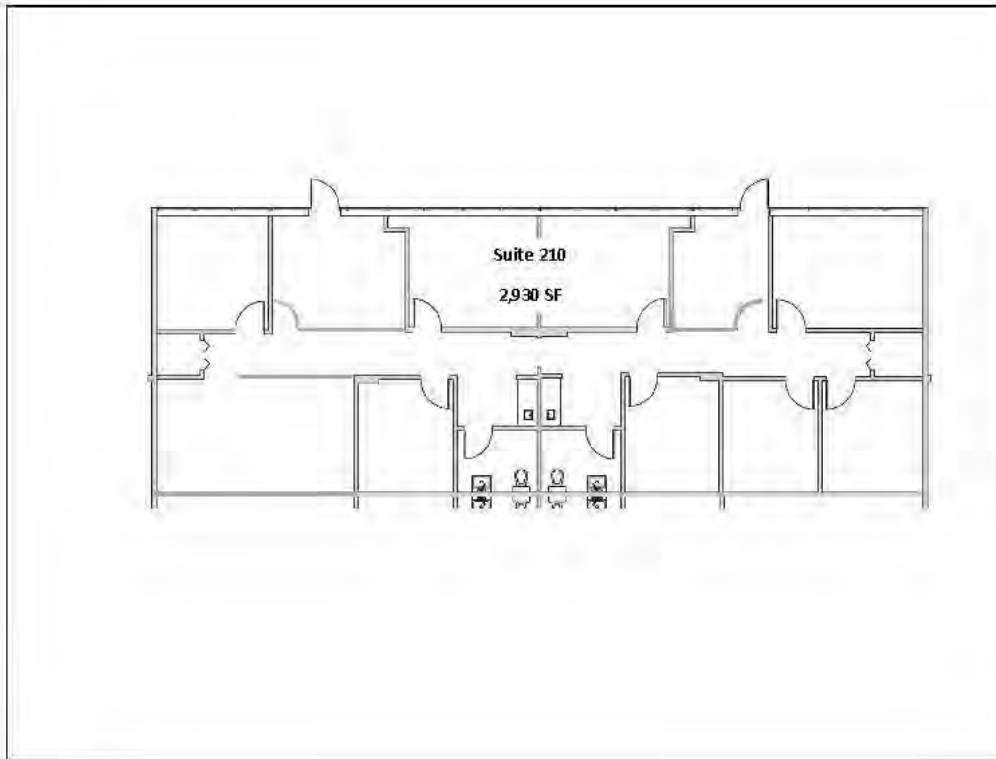
SEAN WILLIAMS
S.V.P. The Office Group
404-876-1640 x126
Sean@BullRealty.com
BullRealty.com

BULL REALTY, INC.
50 Glenlake Parkway, Suite 600
Atlanta, GA 30328
BullRealty.com



Suite 200 - 5,364 SF

DATE MEASURED:	ADDRESS:	 <small>ALABAMA ORLANDO TAMPA</small> <small>(256)441-1442 (407)441-1444 (813)441-1444</small> www.measureDYNAMICS.com
October 2011	Barrett Court 1925 Vaughn Road Suite 200 Kennesaw, Georgia	



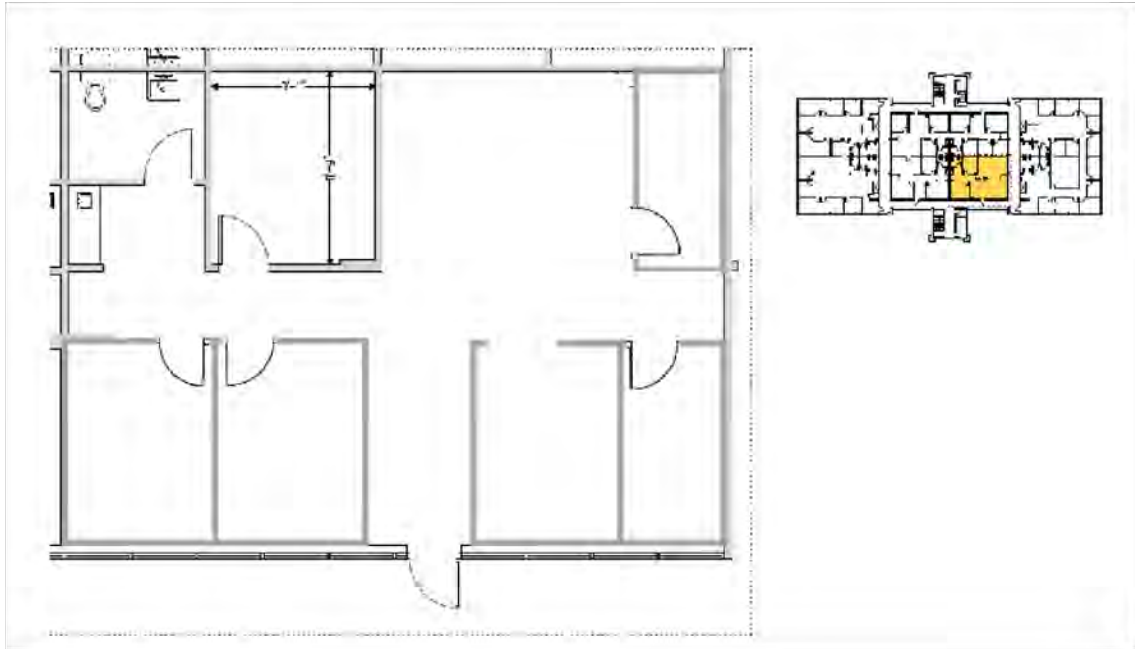
Suite 210
2,930 SF

CONTACT

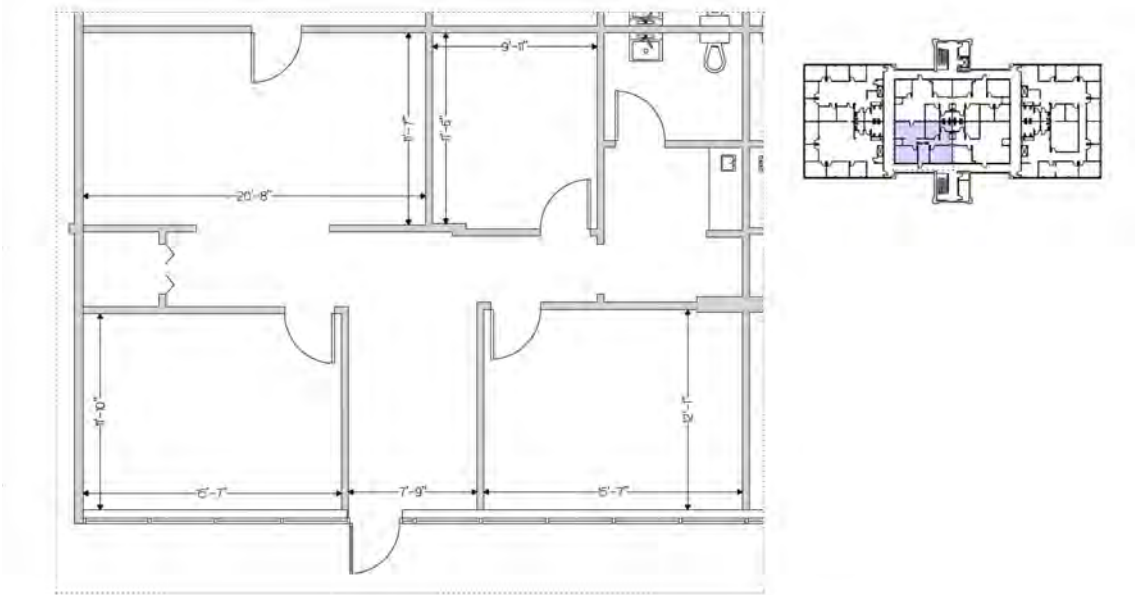


SEAN WILLIAMS
S.V.P. The Office Group
404-876-1640 x126
Sean@BullRealty.com
BullRealty.com

BULL REALTY, INC.
50 Glenlake Parkway, Suite 600
Atlanta, GA 30328
BullRealty.com



Suite 215 — 1,463 SF



Suite 225 — 1,460 SF

DATE MEASURED:	ADDRESS:	measure DYNAMICS™
October 2011	Barrett Court 1925 Vaughn Road Suite 225 Kennesaw, Georgia	ATLANTA OAKWOOD KENNESAW VERMONT 404.771.0000 770.420.0000 www.measureDYNAMICS.com

CONTACT



SEAN WILLIAMS
S.V.P. The Office Group
404-876-1640 x126
Sean@BullRealty.com
BullRealty.com

BULL REALTY, INC.
50 Glenlake Parkway, Suite 600
Atlanta, GA 30328
BullRealty.com